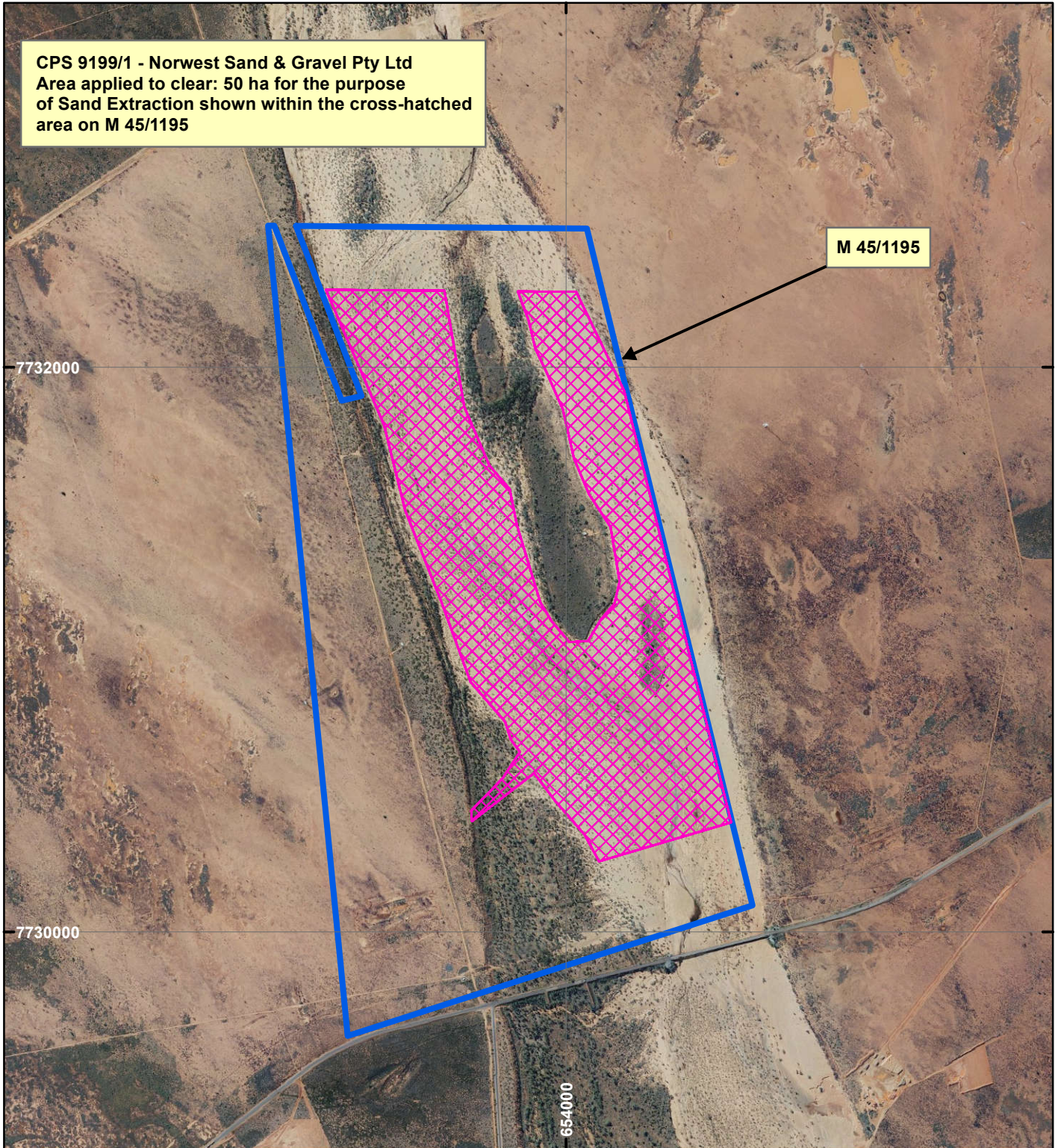


CPS 9199/1 - Norwest Sand & Gravel Pty Ltd

CPS 9199/1 - Norwest Sand & Gravel Pty Ltd
Area applied to clear: 50 ha for the purpose
of Sand Extraction shown within the cross-hatched
area on M 45/1195



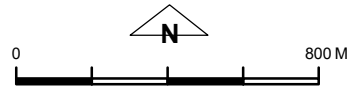
LEGEND



Clearing Instruments



Mining Tenements



Scale 1:20,000

(Approximate when reproduced at A4)

Geocentric Datum Australia 1994

Note: the data in this map have not been projected. This may result in geometric distortion or measurement inaccuracies.

..... Date

Officer with delegated authority under Section 20 of the Environmental Protection Act 1986

Information derived from this map should be confirmed with the data custodian acknowledged by the agency acronym in the legend.



WA Crown Copyright 2002